

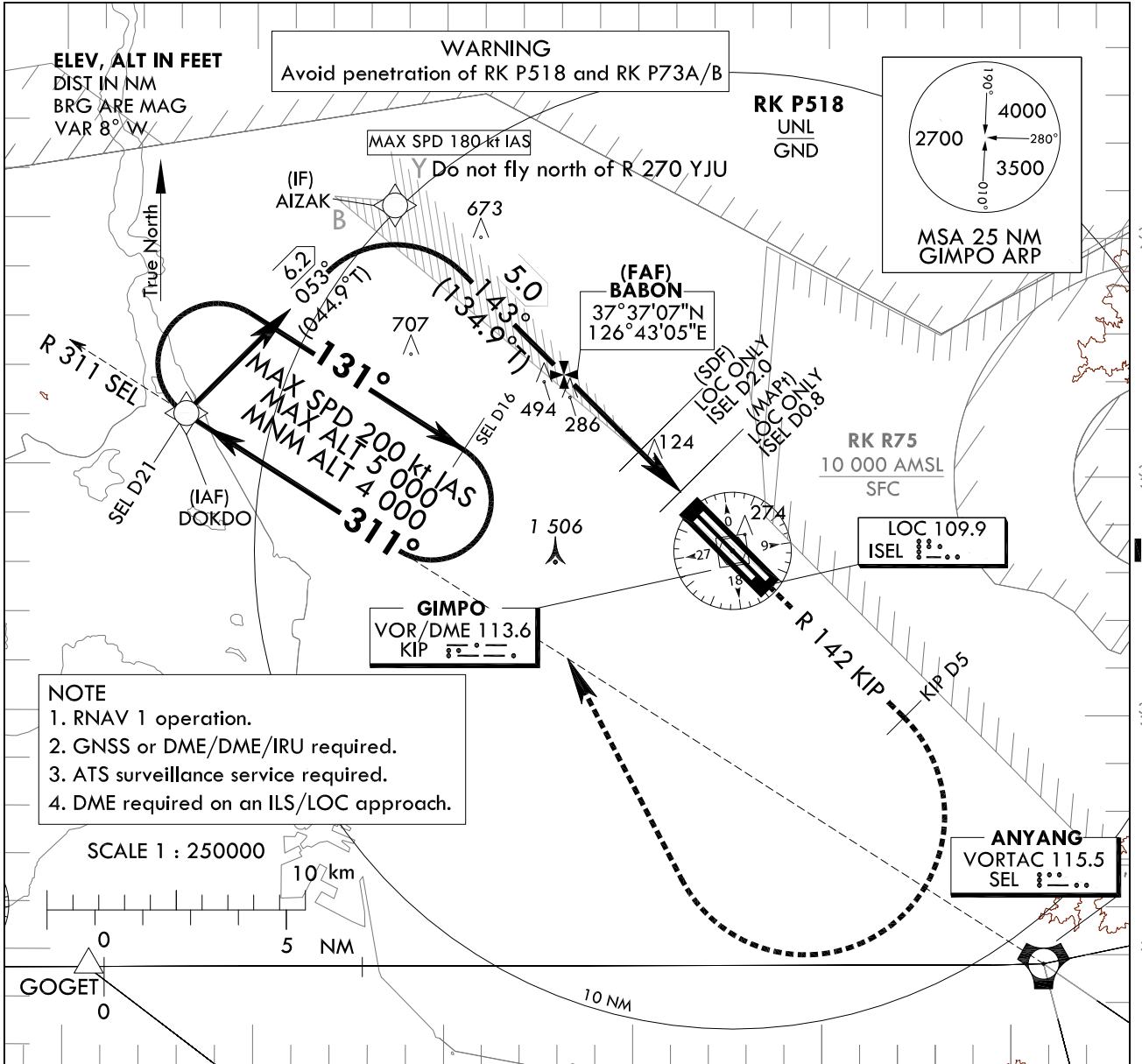
**INSTRUMENT
APPROACH
CHART - ICAO**

AERODROME ELEV 59 ft
HEIGHTS RELATED TO
THR RWY 14L - ELEV 38 ft

SEOUL APP 119.75
119.1
GIMPO TWR 118.1
118.05

SEOUL/Gimpo Intl(RKSS)
ILS Z or LOC Z RWY 14L

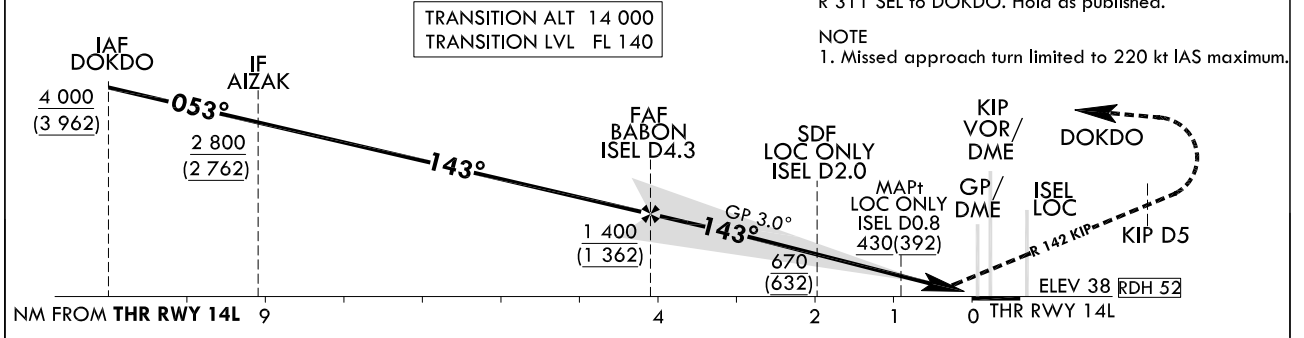
Note : Approach under ICAO Flight Procedures.



126°30'E 126°40'E 126°50'E

RECOMMENDED PROFILE	DME ISEL	4	3	2	1
Final Approach Gradient 5.24%, 318 ft/NM	ALT(HGT)	1 336 (1 298)	1 018 (980)	700 (662)	382 (344)

MISSED APPROACH
Climb to 4 000 ft on RWY HDG to R 142 KIP/D5 then turn RIGHT to intercept and proceed via R 311 SEL to DOKDO. Hold as published.



CATEGORY	DA(DH)/MDA(MDH)	A	B	C	D	DL
Straight-in	238 (200)	RVR 550 m, VIS 800 m				
		1 200 m				
	1 100 m					
	1 800 m					

* Timing Not authorized for defining MAPt.
* Circling Not authorized.

Change : Amended morse code(LOC ISEL).

SEOUL/Gimpo Intl(RKSS)
ILS Z or LOC Z RWY 14L

AERONAUTICAL DATA TABULATION

ILS/LOC Z Approach to RWY 14L from DOKDO		
Fix / Point		Coordinates
DOKDO(IAF)		37°36'17.1"N 126°33'07.1"E
AIZAK(IF)	BRG 52.82°/6.20 NM	37°40'40.0"N 126°38'36.6"E
BABON(FAF)	BRG 142.95°/4.30 NM ISEL	37°37'07.1"N 126°43'04.8"E
D2.0 ISEL (SDF LOC ONLY)	BRG 142.95°/2.00 NM ISEL	37°35'32.2"N 126°45'04.3"E
D0.8 ISEL (MAPt LOC ONLY)	BRG 142.95°/0.80 NM ISEL	37°34'41.1"N 126°46'08.4"E
THR RWY14L		37°34'14.55"N 126°46'41.80"E
ISEL DME		37°34'03.8"N 126°46'48.1"E
KIP VOR/DME		37°33'27.1"N 126°47'31.3"E
D5 KIP	R 142 KIP/5.00 NM	37°29'58.1"N 126°52'02.1"E

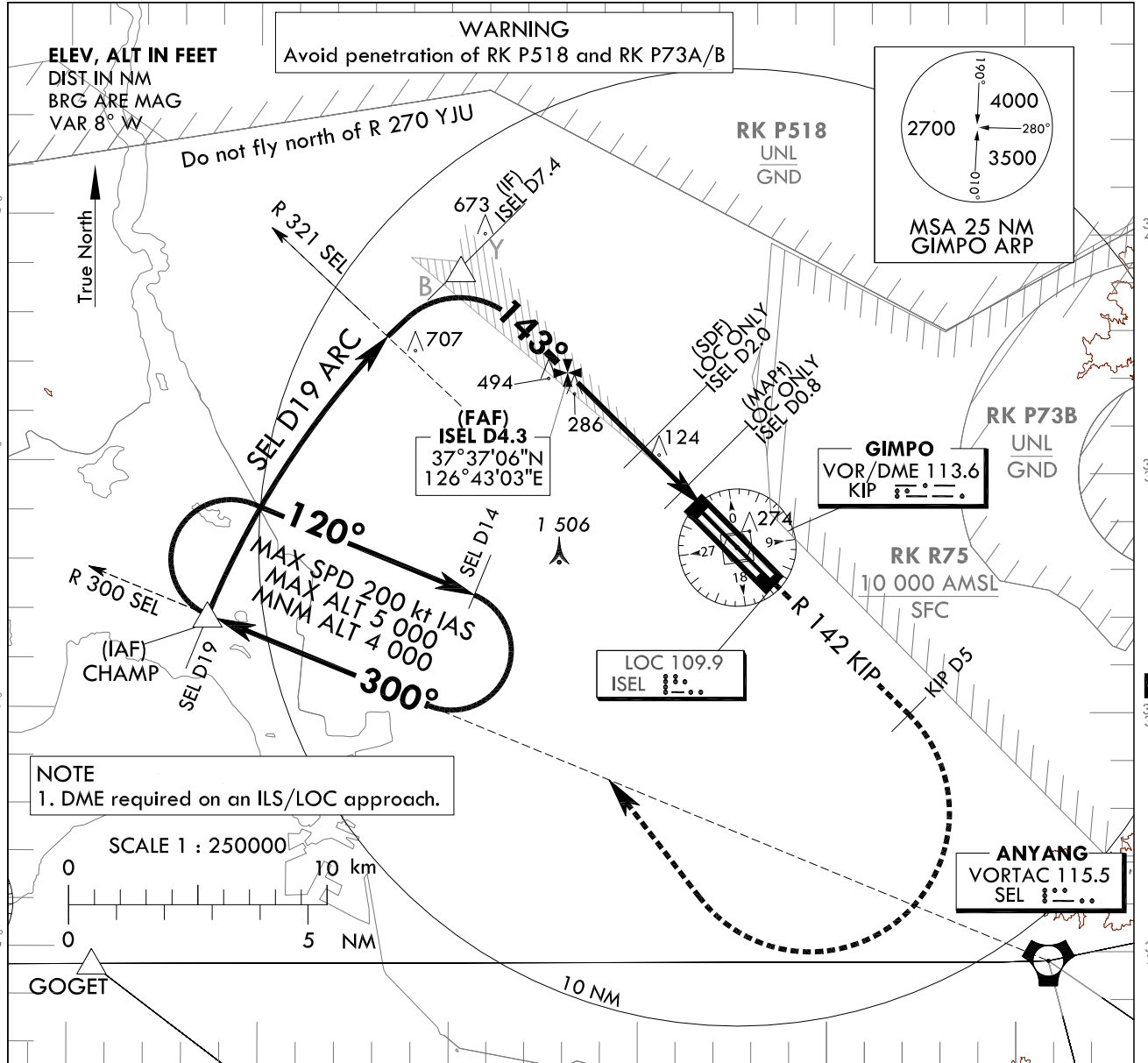
**INSTRUMENT
APPROACH
CHART - ICAO**

AERODROME ELEV 59 ft
HEIGHTS RELATED TO
THR RWY 14L - ELEV 38 ft

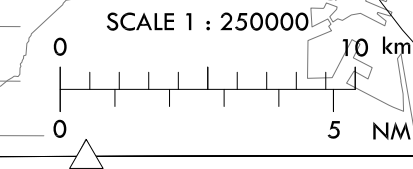
SEOUL APP 119.75
119.1
GIMPO TWR 118.1
118.05

**SEOUL/Gimpo Intl(RKSS)
ILS Y or LOC Y RWY 14L**

Note : Approach under ICAO Flight Procedures.



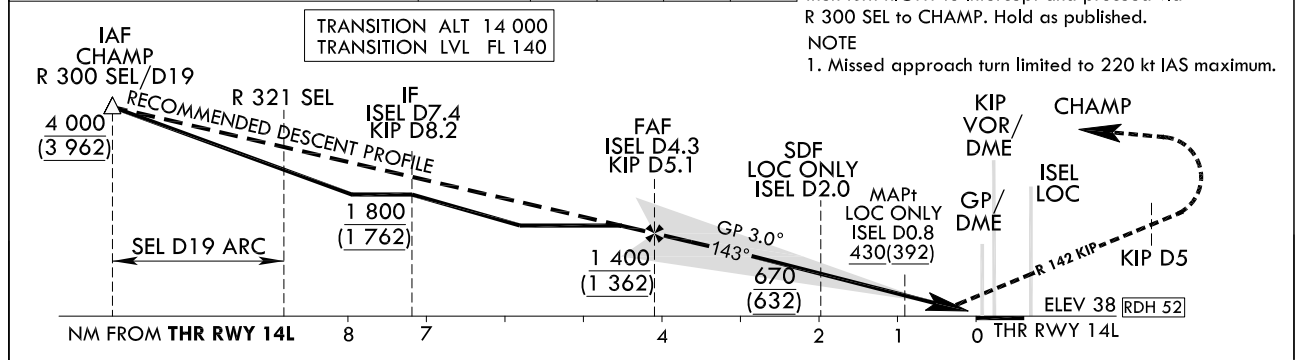
NOTE
1. DME required on an ILS/LOC approach.



126°30'E 126°40'E 126°50'E

RECOMMENDED PROFILE	DME ISEL	4	3	2	1
Final Approach Gradient 5.24%, 318 ft/NM	ALT(HGT)	1 336 (1 298)	1 018 (980)	700 (662)	382 (344)

MISSED APPROACH
Climb to 4 000 ft on RWY HDG to R 142 KIP/D5 then turn RIGHT to intercept and proceed via R 300 SEL to CHAMP. Hold as published.
NOTE
1. Missed approach turn limited to 220 kt IAS maximum.



CATEGORY	DA(DH)/MDA(MDH)	A	B	C	D	DL																											
		<table border="1"> <tr> <td rowspan="2">Straight-in</td> <td rowspan="2">CAT-I</td> <td>FULL</td> <td colspan="5">RVR 550 m, VIS 800 m</td> </tr> <tr> <td>ALS INOP</td> <td colspan="5">1 200 m</td> </tr> <tr> <td rowspan="2">LOC</td> <td rowspan="2">GP & ALS INOP</td> <td>GP INOP</td> <td colspan="5">1 100 m</td> </tr> <tr> <td>GP & ALS INOP</td> <td colspan="5">1 800 m</td> </tr> </table>	Straight-in	CAT-I	FULL	RVR 550 m, VIS 800 m					ALS INOP	1 200 m					LOC	GP & ALS INOP	GP INOP	1 100 m					GP & ALS INOP	1 800 m							
Straight-in	CAT-I	FULL			RVR 550 m, VIS 800 m																												
		ALS INOP	1 200 m																														
LOC	GP & ALS INOP	GP INOP	1 100 m																														
		GP & ALS INOP	1 800 m																														

* Timing Not authorized for defining MAPt.
* Circling Not authorized.

Change : Amended morse code(LOC ISEL).

AERONAUTICAL DATA TABULATION

ILS/LOC Y Approach to RWY 14L from CHAMP		
Fix / Point		Coordinates
CHAMP(IAF)		37°32'02.0"N 126°33'37.0"E
D7.4 ISEL(IF)	R 300 SEL/19.00 NM	37°39'17.7"N 126°40'14.0"E
D4.3 ISEL(FAF)	BRG 142.95°/4.30 NM ISEL	37°37'05.8"N 126°43'02.9"E
D2.0 ISEL (SDF LOC ONLY)	BRG 142.95°/2.00 NM ISEL	37°35'31.5"N 126°45'03.5"E
D0.8 ISEL (MAPt LOC ONLY)	BRG 142.95°/0.80 NM ISEL	37°34'40.9"N 126°46'08.1"E
THR RWY14L		37°34'14.55"N 126°46'41.80"E
ISEL DME		37°34'03.8"N 126°46'48.1"E
KIP VOR/DME		37°33'27.1"N 126°47'31.3"E
D5 KIP	R 142 KIP/5.00 NM	37°29'58.1"N 126°52'02.1"E

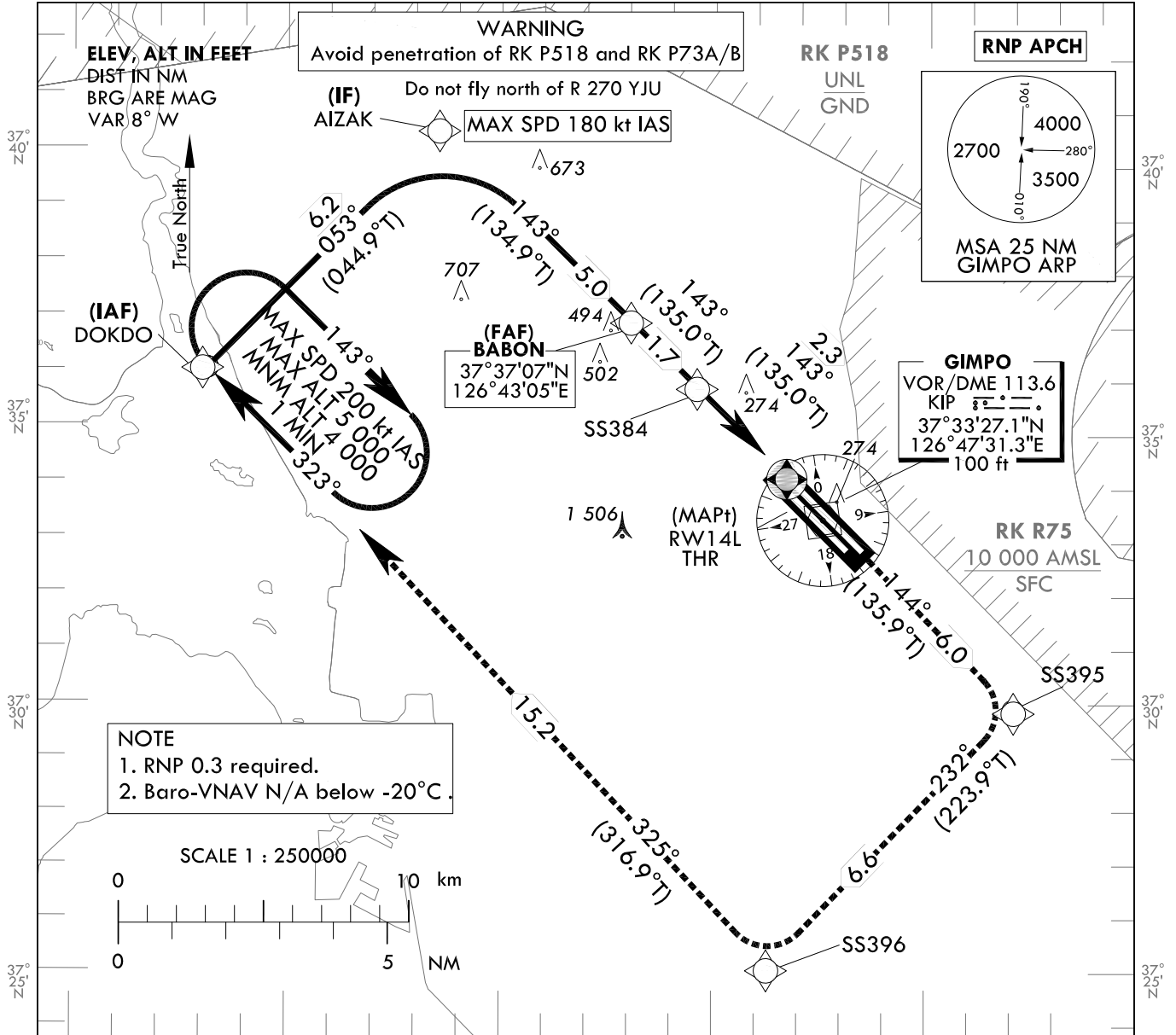
**INSTRUMENT
APPROACH
CHART - ICAO**

AERODROME ELEV 59 ft
HEIGHTS RELATED TO
THR RWY 14L - ELEV 38 ft

SEOUL APP 119.75
119.1
GIMPO TWR 118.1
118.05

**SEOUL/Gimpo Intl(RKSS)
RNP RWY 14L**

Note : Approach under ICAO Flight Procedures.



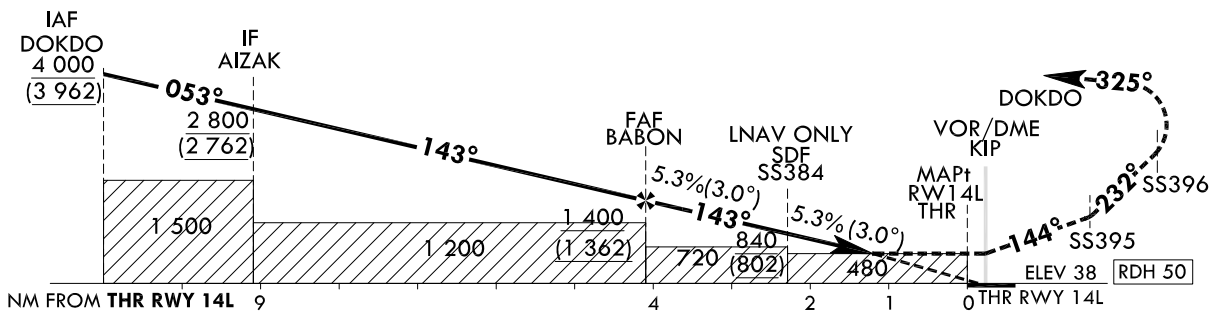
MISSED APPROACH

Climb to 4 000 ft. Track to SS395, SS396 and DOKDO.
Hold as published.

NOTE

1. Missed approach turn limited to 220 kt IAS maximum.

TRANSITION ALT 14 000
TRANSITION LVL FL 140



CATEGORY		MDA(H)/DA(H)	A	B	C	D	Knots					
LNAV	FULL	480 (442)		1 400 m			Rate of descent V/V fpm	60	90	120	150	180
	ALS INOP			2 100 m				318	478	637	796	955
LNAV/VNAV	FULL	450 (412)		1 200 m			* Timing Not authorized for defining MAPt. * Circling Not authorized.					
	ALS INOP			1 900 m								

Change : Page control.

AERONAUTICAL DATA TABULATION

Instrument Approach Procedure Coding Tables

RNP RWY 14L

Serial Number	Path Descriptor	Waypoint Identifier	Fly-over	Course/Track °M(°T)	Distance (NM)	Turn direction	Altitude (ft)	Speed (kt)	Coordinates	VPA/ TCH	Navigation specification	Remarks
001	IF	DOKDO	-	-	-	-	+4 000	-	37°36'17.1"N 126°33'07.1"E (R 292 KIP/D12, R 311 SEL/D21)	-	RNP APCH	IAF
002	TF	AIZAK	-	053 (044.9)	6.2	-	+2 800	-180	37°40'40.0"N 126°38'36.6"E (R 324 KIP/D10, R 327 SEL/D21)	-	RNP APCH	IF
003	TF	BABON	-	143 (134.9)	5.0	-	+1 400	-	37°37'07.1"N 126°43'04.8"E (R 324 KIP/D5, R 329 SEL/D16)	-	RNP APCH	FAF
004	TF	SS384	-	143 (135.0)	1.7	-	+840	-	37°35'54.2"N 126°44'36.6"E (R 325 KIP/D3, R 329 SEL/D14)	-	RNP APCH	SDF
005	TF	RW14L	Y	143 (135.0)	2.3	-	+480	-	37°34'14.6"N 126°46'41.8"E (R 328KIP/D1, R 331 SEL/D12)	-3.01/50	RNP APCH	MAPt
006	TF	SS395	-	144 (135.9)	6.0	-	-	-	37°29'54.5"N 126°51'57.6"E (R 143 KIP/D5, R 338 SEL/D6)	-	RNP APCH	-
007	TF	SS396	-	232 (223.9)	6.6	-	-	-220	37°25'09.3"N 126°46'13.6"E (R 195 KIP/D8, R 281 SEL/D8)	-	RNP APCH	-
008	TF	DOKDO	Y	325 (316.9)	15.2	-	+4 000	-220	37°36'17.1"N 126°33'07.1"E (R 292 KIP/D12, R 311 SEL/D21)	-	RNP APCH	-
009	HM	DOKDO	Y	323 (314.9)	-	R	-5 000 +4 000	-200	37°36'17.1"N 126°33'07.1"E (R 292 KIP/D12, R 311 SEL/D21)	-	RNP APCH	1 min (Outbound timing)

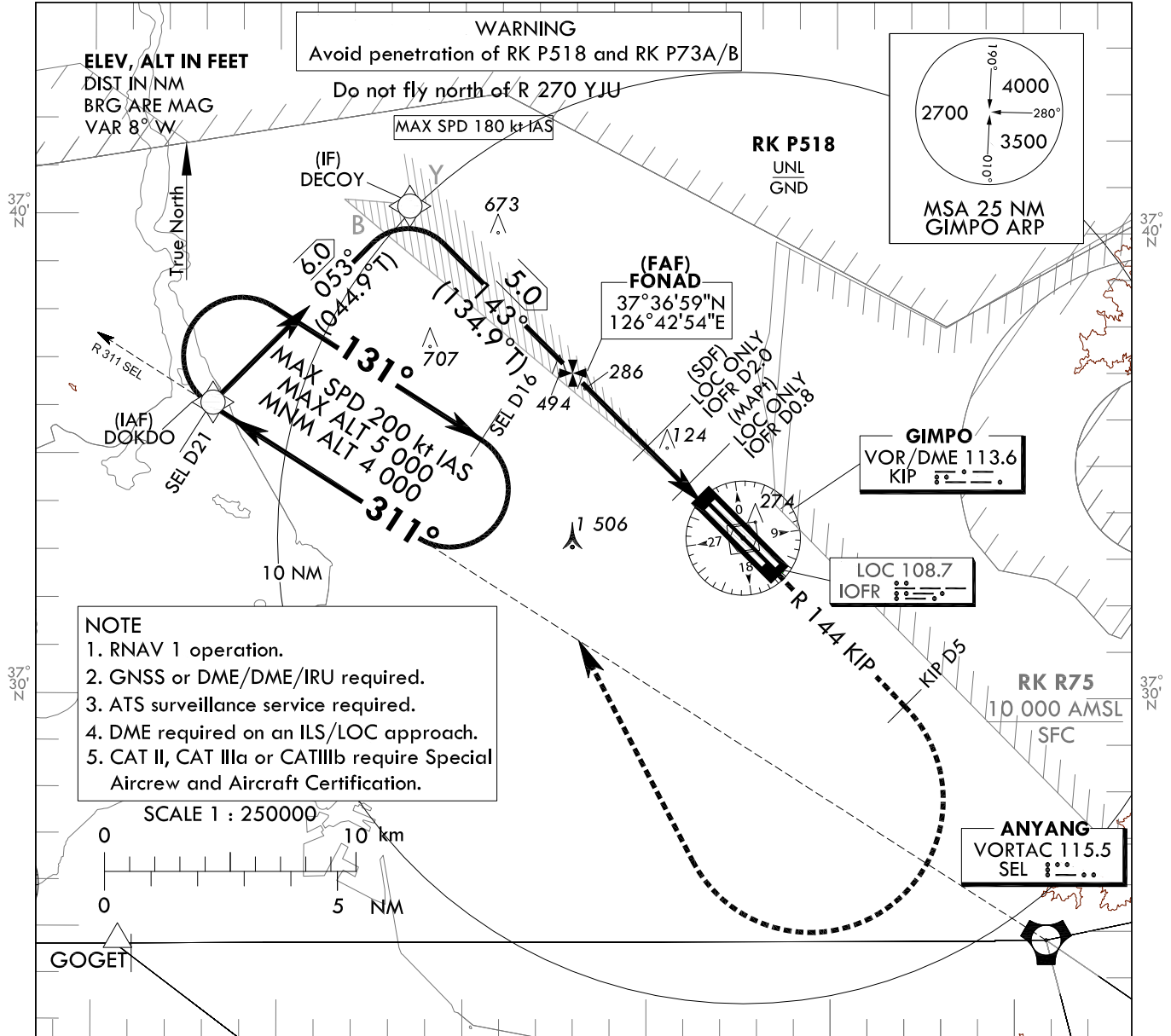
**INSTRUMENT
APPROACH
CHART - ICAO**

AERODROME ELEV 59 ft
HEIGHTS RELATED TO
THR RWY 14R - ELEV 34 ft

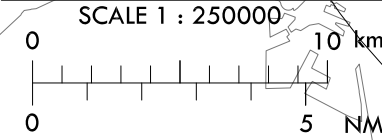
SEOUL APP 119.75
119.1
GIMPO TWR 118.1
118.05

**SEOUL/Gimpo Intl(RKSS)
ILS or LOC RWY 14R
CAT II & III**

Note : Approach under ICAO Flight Procedures.



- NOTE**
1. RNAV 1 operation.
 2. GNSS or DME/DME/IRU required.
 3. ATS surveillance service required.
 4. DME required on an ILS/LOC approach.
 5. CAT II, CAT IIIa or CAT IIIb require Special Aircrew and Aircraft Certification.

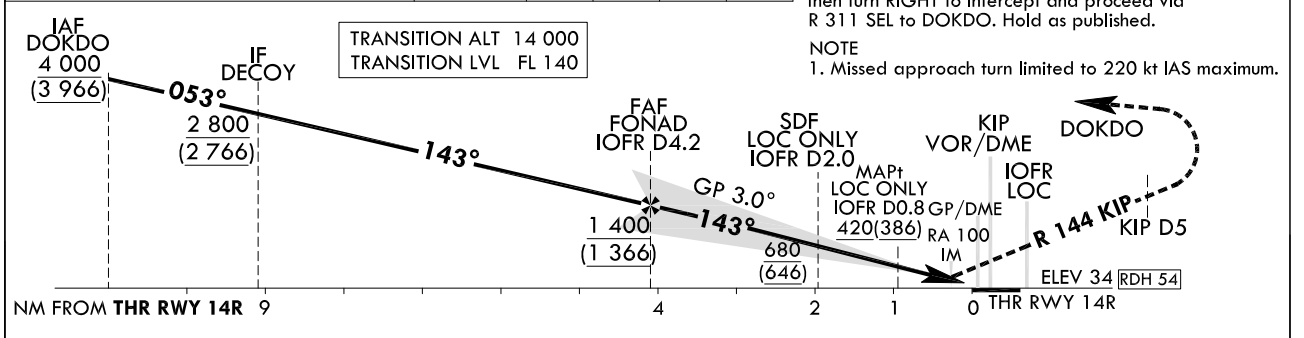


126°30'E 126°40'E 126°50'E

RECOMMENDED PROFILE	DME IOFR	4	3	2	1
Final Approach Gradient 5.24%, 318 ft/NM	ALT(HGT)	1 336 (1 302)	1 018 (984)	700 (666)	382 (348)

MISSED APPROACH
Climb to 4 000 ft on RWY HDG to R 144 KIP/D5 then turn RIGHT to intercept and proceed via R 311 SEL to DOKDO. Hold as published.

NOTE
1. Missed approach turn limited to 220 kt IAS maximum.



CATEGORY	DA(DH)/MDA(MDH)	A	B	C	D	DL
		RVR 550 m, VIS 800 m				
Straight-in	CAT-I	FULL	RVR 550 m, VIS 800 m			
		ALS INOP	1 200 m			
	LOC	GP INOP	1 100 m			
		GP & ALS INOP	1 800 m			
CAT II	134(100)	300 m	300 m ¹⁾ /350 m			
CAT IIIa	-	175m				
CAT IIIb	-	75 m ²⁾ /125 m				

- 1) For CAT D/DL aeroplane conducting and autoland.
 - 2) Aeroplane use Fail-operational system.
- * Timing Not authorized for defining MAPt.
* Circling Not authorized.

Change : Page control.

SEOUL/Gimpo Intl(RKSS)
ILS or LOC RWY 14R
CAT II & CAT III

AERONAUTICAL DATA TABULATION

ILS/LOC Approach to RWY 14R from DOKDO		
Fix / Point	Coordinates	
DOKDO(IAF)	37°36'17.1"N	126°33'07.1"E
DECOY(IF) BRG 052.81°/6.00 NM	37°40'31.8"N	126°38'26.2"E
FONAD(FAF) BRG 142.95°/4.20 NM IOFR	37°36'59.0"N	126°42'54.3"E
D2.0 IOFR(SDF LOC ONLY) BRG 142.95°/2.00 NM IOFR	37°35'23.9"N	126°44'53.9"E
D0.8 IOFR(MAP† LOC ONLY) BRG 142.95°/0.80 NM IOFR	37°34'32.9"N	126°45'58.1"E
THR RWY14R	37°34'06.19"N	126°46'31.60"E
IOFR DME	37°34'01.9"N	126°46'44.2"E
KIP VOR/DME	37°33'27.1"N	126°47'31.3"E
D5 KIP R 144 KIP/5.00 NM	37°29'50.7"N	126°51'52.7"E

**INSTRUMENT
APPROACH
CHART - ICAO**

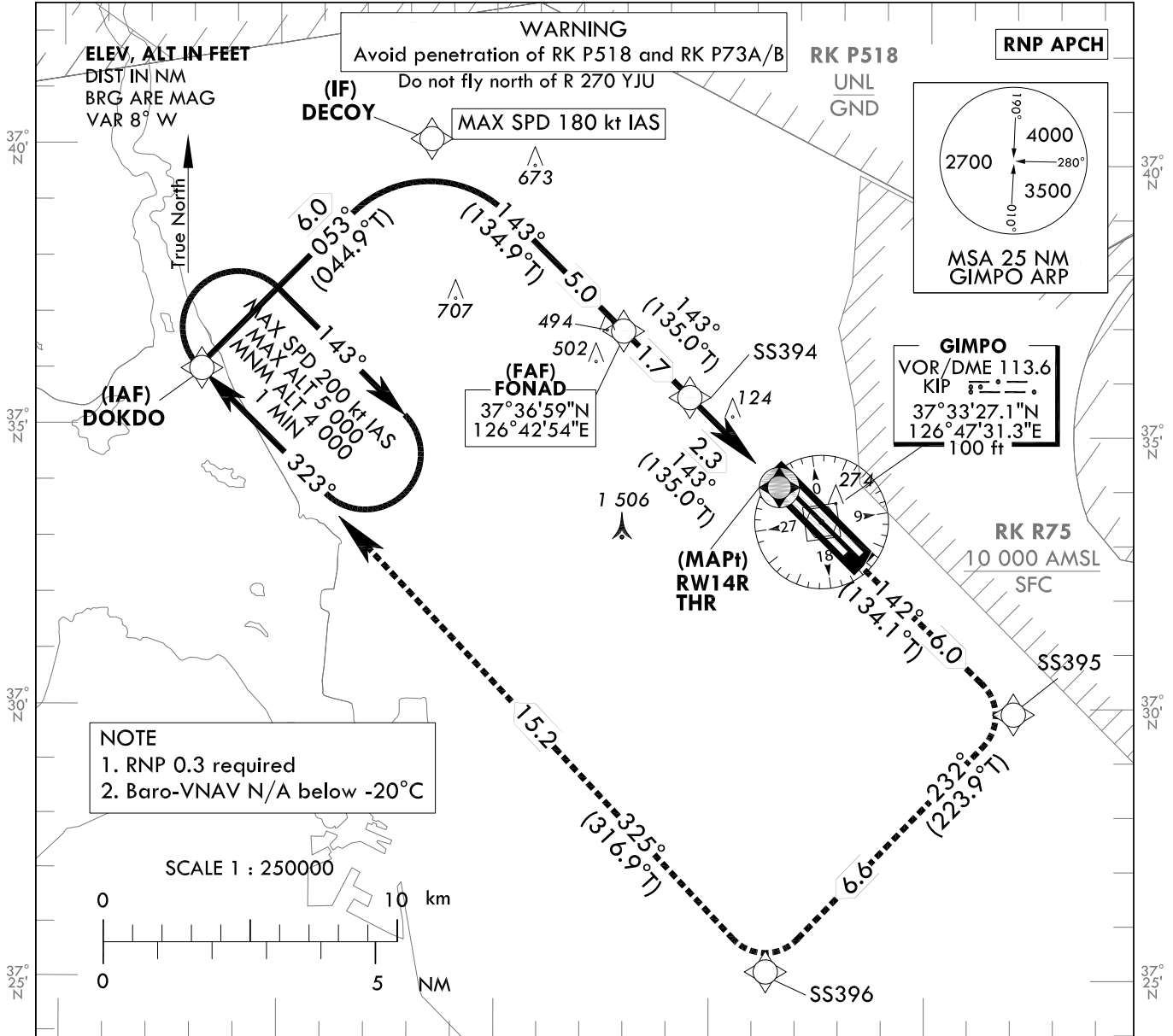
AERODROME ELEV 59 ft
HEIGHTS RELATED TO
THR RWY 14R - ELEV 34 ft

SEOUL APP 119.75
119.1
GIMPO TWR 118.1
118.05

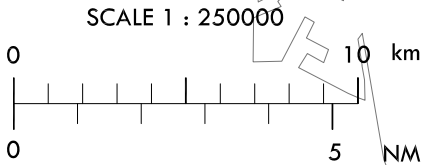
**SEOUL/Gimpo Intl(RKSS)
RNP RWY 14R**

Note : Approach under ICAO Flight Procedures.

126°50'E



NOTE
1. RNP 0.3 required
2. Baro-VNAV N/A below -20°C



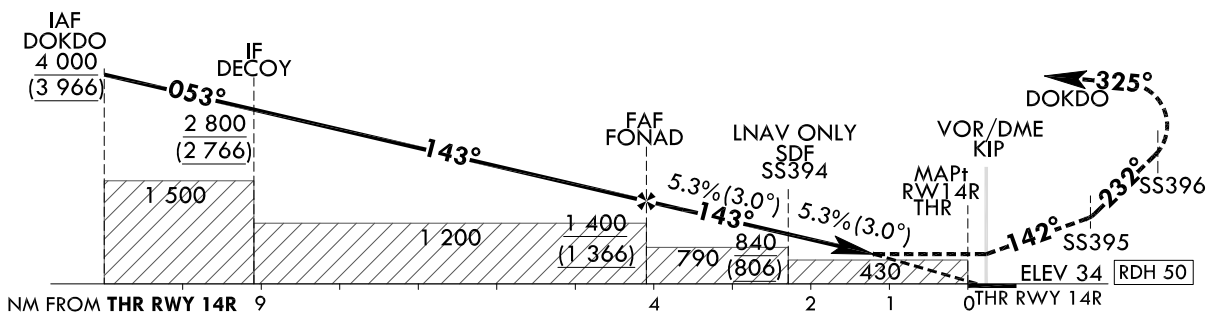
MISSED APPROACH

Climb to 4 000 ft. Track to SS395, SS396 and DOKDO. Hold as published.

NOTE

1. Missed approach turn limited to 220 kt IAS maximum.

TRANSITION ALT 14 000
TRANSITION LVL FL 140



CATEGORY		MDA(H)/DA(H)	A	B	C	D	Knots					
LNAV	FULL	450 (416)		1 200 m			Rate of descent V/V fpm	60	90	120	150	180
	ALS INOP			1 900 m				318	478	637	796	955
LNAV/VNAV	FULL	450 (416)		1 200 m			* Timing Not authorized for defining MAPt. * Circling Not authorized.					
	ALS INOP			1 900 m								

Change : Page control.

AERONAUTICAL DATA TABULATION

Instrument Approach Procedure Coding Tables

RNP RWY 14R

Serial Number	Path Descriptor	Waypoint Identifier	Fly-over	Course/Track °M(°T)	Distance (NM)	Turn direction	Altitude (ft)	Speed (kt)	Coordinates	VPA/TCH	Navigation specification	Remarks
001	IF	DOKDO	-	-	-	-	+4 000	-	37°36'17.1"N 126°33'07.1"E (R 292 KIP/D12, R 311 SEL/D21)	-	RNP APCH	IAF
002	TF	DECOY	-	053 (044.9)	6.0	-	+2 800	-180	37°40'31.8"N 126°38'26.2"E (R 322 KIP/D10, R 327 SEL/D21)	-	RNP APCH	IF
003	TF	FONAD	-	143 (134.9)	5.0	-	+1 400	-	37°36'59.0"N 126°42'54.3"E (R 322 KIP/D5, R 328 SEL/D16)	-	RNP APCH	FAF
004	TF	SS394	-	143 (135.0)	1.7	-	+840	-	37°35'45.6"N 126°44'26.6"E (R 321 KIP/D3, R 329 SEL/D14)	-	RNP APCH	SDF
005	TF	RW14R	Y	143 (135.0)	2.3	-	+450	-	37°34'06.2"N 126°46'31.6"E (R 317 KIP/D1, R 330 SEL/D12)	-3.01/50	RNP APCH	MAPt
006	TF	SS395	-	142 (134.1)	6.0	-	-	-	37°29'54.5"N 126°51'57.6"E (R 143 KIP/D5, R 338 SEL/D6)	-	RNP APCH	-
007	TF	SS396	-	232 (223.9)	6.6	-	-	-220	37°25'09.3"N 126°46'13.6"E (R 195 KIP/D8, R 281 SEL/D8)	-	RNP APCH	-
008	TF	DOKDO	Y	325 (316.9)	15.2	-	+4 000	-220	37°36'17.1"N 126°33'07.1"E (R 292 KIP/D12, R 311 SEL/D21)	-	RNP APCH	-
009	HM	DOKDO	Y	323 (314.9)	-	R	-5 000 +4 000	-200	37°36'17.1"N 126°33'07.1"E (R 292 KIP/D12, R 311 SEL/D21)	-	RNP APCH	1 min (Outbound timing)

**INSTRUMENT
APPROACH
CHART - ICAO**

AERODROME ELEV 59 ft
HEIGHTS RELATED TO
THR RWY 32L - ELEV 41 ft

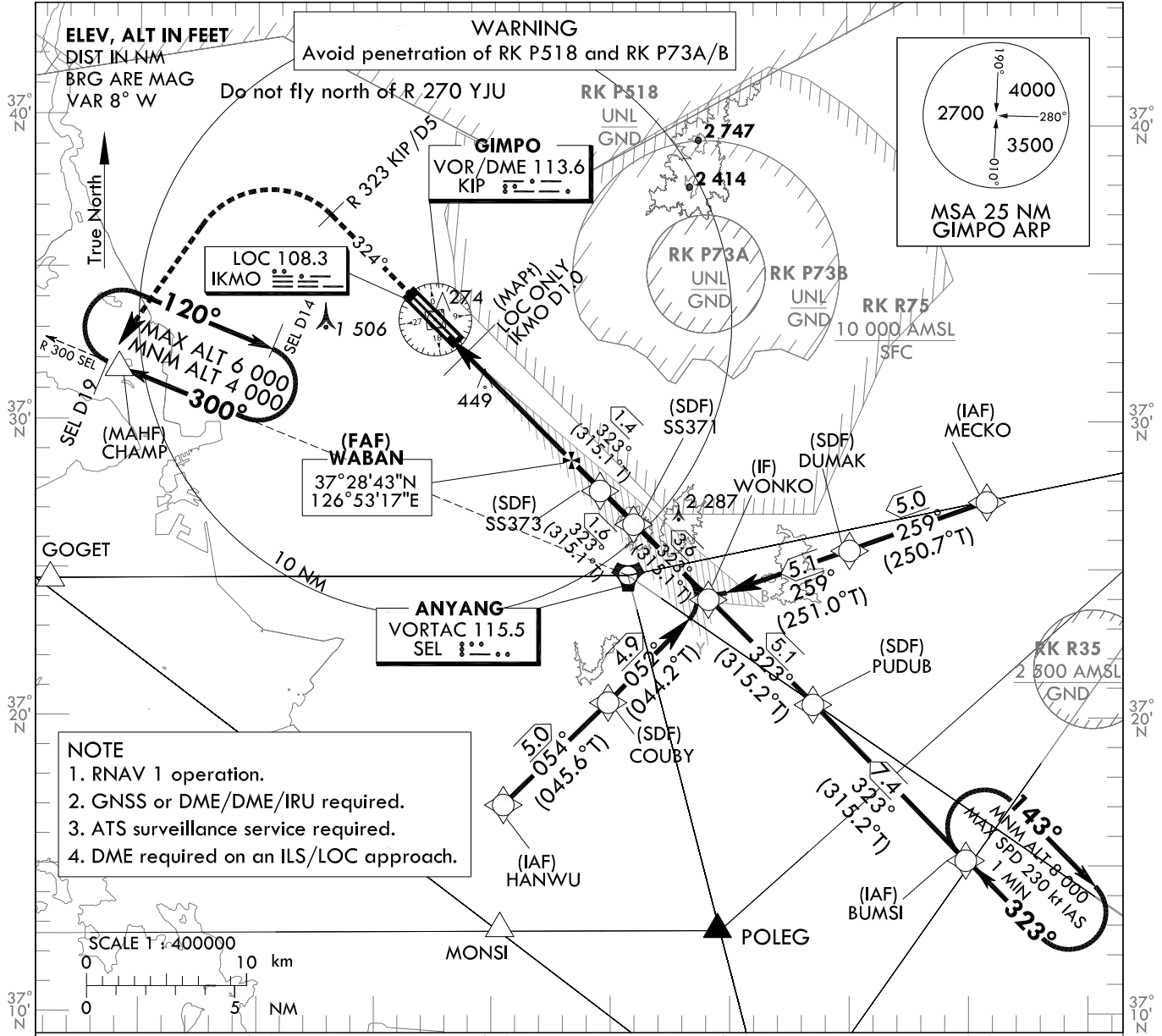
SEOUL APP 119.75
119.1
GIMPO TWR 118.1
118.05

**SEOUL/Gimpo Intl(RKSS)
ILS or LOC RWY 32L**

Note : Approach under ICAO Flight Procedures.

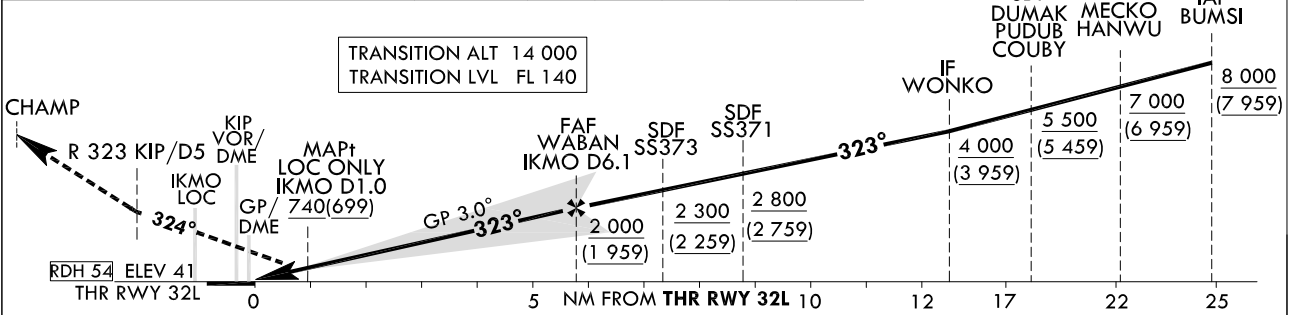
126°50'E

127°10'E



NOTE
1. RNAV 1 operation.
2. GNSS or DME/DME/IRU required.
3. ATS surveillance service required.
4. DME required on an ILS/LOC approach.

RECOMMENDED PROFILE		DME IKMO	6	5	4	3	2
Final Approach Gradient 5.24%, 318 ft/NM		ALT(HGT)	1 969 (1 926)	1 655 (1 614)	1 328 (1 287)	1 004 (963)	681 (640)



CATEGORY	DA(DH)/MDA(MDH)	A	B	C	D	DL
Straight-in	241 (200)	RVR 550m, VIS 800m				
		1 200 m				
	740 (699)	2 500 m				
		3 200 m				

MISSED APPROACH
After 500 ft, Climb on HDG 324° to R 323 KIP/D5. Continue climb to 4 000 ft. Left turn direct to CHAMP. Hold as published.

NOTE
1. Missed approach turn limited to 220 kt IAS maximum.
* Timing Not authorized for defining MAPt.
* Circling Not authorized.

Change : Page control.

SEOUL/Gimpo Int'l(RKSS)
ILS or LOC RWY 32L

AERONAUTICAL DATA TABULATION

ILS/LOC Approach to RWY 32L from MECKO to WONKO(IF)		
Fix / Point		Coordinates
MECKO(IAF)		37°27'20.9"N 127°11'04.4"E
DUMAK(SDF)	BRG 258.62°/5.00 NM	37°25'41.9"N 127°05'11.1"E
WONKO(IF)	BRG 258.13°/5.10 NM	37°24'02.0"N 126°59'08.0"E
ILS/LOC Approach to RWY 32L from BUMSI to WONKO(IF)		
Fix / Point		Coordinates
BUMSI(IAF)		37°15'10.2"N 127°10'09.6"E
PUDUB(SDF)	BRG 323.49°/7.42 NM	37°20'26.5"N 127°03'36.6"E
WONKO(IF)	BRG 323.44°/5.06 NM	37°24'02.0"N 126°59'08.0"E
ILS/LOC Approach to RWY 32L from HANWO to WONKO(IF)		
Fix / Point		Coordinates
HANWU(IAF)		37°17'00.6"N 126°50'21.9"E
COUBY(SDF)	BRG 53.55°/5.00 NM	37°20'30.7"N 126°54'50.7"E
WONKO(IF)	BRG 52.11°/4.90 NM	37°24'02.0"N 126°59'08.0"E
ILS/LOC Approach to RWY 32L from WONKO(IF) to MAHF		
Fix / Point		Coordinates
SS371(SDF)	BRG 323.05°/9.10 NM IKMO	37°26'36.1"N 126°55'55.6"E
SS373(SDF)	BRG 323.05°/7.50 NM IKMO	37°27'44.9"N 126°54'29.5"E
WABAN(FAF)	BRG 323.05°/6.10 NM IKMO	37°28'42.9"N 126°53'17.0"E
D1.0 IKMO(MAPt LOC ONLY)	BRG 323.05°/1.00 NM IKMO	37°32'17.6"N 126°48'48.0"E
THR RWY32L		37°32'52.83"N 126°48'03.71"E
IKMO DME		37°32'57.4"N 126°47'51.3"E
KIP VOR/DME		37°33'27.1"N 126°47'31.3"E
Climb to 500 ft	HDG 324	-
D5 KIP	R 323 KIP/5.00 NM	37°36'59.7"N 126°43'04.6"E
CHAMP	BRG 222.76°/19.00 NM SEL	37°32'02.0"N 126°33'37.0"E

Change : Page control.

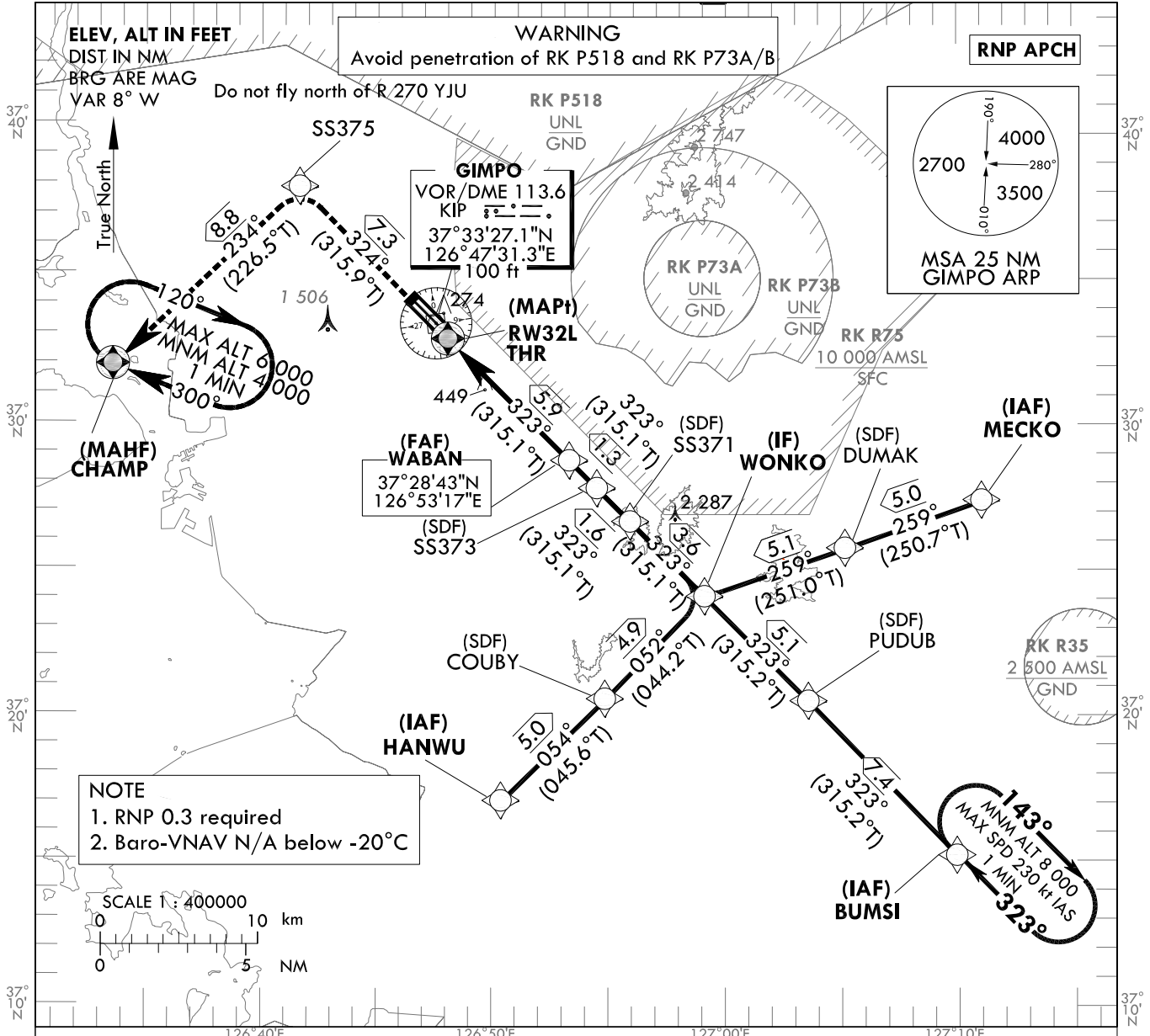
**INSTRUMENT
APPROACH
CHART - ICAO**

AERODROME ELEV 59 ft
HEIGHTS RELATED TO
THR RWY 32L - ELEV 41 ft

SEOUL APP 119.75
119.1
GIMPO TWR 118.1
118.05

SEOUL/Gimpo Intl(RKSS)
RNP RWY 32L

Note : Approach under ICAO Flight Procedures.

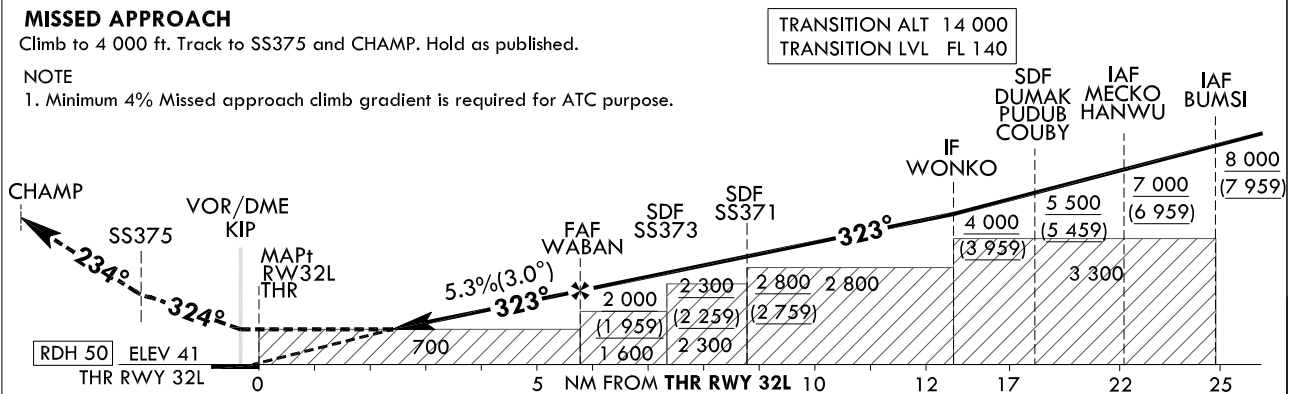


MISSED APPROACH

Climb to 4 000 ft. Track to SS375 and CHAMP. Hold as published.

NOTE

1. Minimum 4% Missed approach climb gradient is required for ATC purpose.



CATEGORY		MDA(H)/DA(H)	A	B	C	D	Knots						
LNAV	FULL	700 (659)		2 300 m			Rate of descent	V/V fpm	318	478	637	796	955
	ALS INOP		3 000 m										
LNAV/VNAV	FULL	610 (569)		1 900 m			* Timing Not authorized for defining MAPt. * Circling Not authorized.						
	ALS INOP		2 600 m										

Change : Page control.

AERONAUTICAL DATA TABULATION

Instrument Approach Procedure Coding Tables

RNP RWY 32L - via MECKO to WONKO(IF)

Serial Number	Path Descriptor	Waypoint Identifier	Fly-over	Course/Track over	Distance (NM)	Turn direction	Altitude (ft)	Speed (kt)	Coordinates	VPA/TCH	Navigation specification	Remarks
001	IF	MECKO	-	-	-	-	+7 000	-	37°27'20.9"N 127°11'04.4"E (R 116 KIP/D20, R 086 SEL/D13)	-	RNP APCH	IAF
002	TF	DUMAK	-	259 (250.7)	5.0	-	+5 500	-	37°25'41.9"N 127°05'11.1"E (R 127 KIP/D16, R 091 SEL/D8)	-	RNP APCH	SDF
003	TF	WONKO	-	259 (251.0)	5.1	-	+4 000	-	37°24'02.0"N 126°59'08.0"E (R 143 KIP/D13, R 114 SEL/D3)	-	RNP APCH	IF

RNP RWY 32L - via BUMSI to WONKO(IF)

Serial Number	Path Descriptor	Waypoint Identifier	Fly-over	Course/Track over	Distance (NM)	Turn direction	Altitude (ft)	Speed (kt)	Coordinates	VPA/TCH	Navigation specification	Remarks
001	IF	BUMSI	-	-	-	-	+8 000	-	37°15'10.2"N 127°10'09.6"E (R 143 KIP/D26, R 138 SEL/D15)	-	RNP APCH	IAF
002	TF	PUDUB	-	323 (315.2)	7.4	-	+5 500	-	37°20'26.5"N 127°03'36.6"E (R 143 KIP/D18, R 133 SEL/D8)	-	RNP APCH	SDF
003	TF	WONKO	-	323 (315.2)	5.1	-	+4 000	-	37°24'02.0"N 126°59'08.0"E (R 143 KIP/D13, R 114 SEL/D3)	-	RNP APCH	IF

RNP RWY 32L - via HANWU to WONKO(IF)

Serial Number	Path Descriptor	Waypoint Identifier	Fly-over	Course/Track over	Distance (NM)	Turn direction	Altitude (ft)	Speed (kt)	Coordinates	VPA/TCH	Navigation specification	Remarks
001	IF	HANWU	-	-	-	-	+7 000	-	37°17'00.6"N 126°50'21.9"E (R 180 KIP/D17, R 217 SEL/D9)	-	RNP APCH	IAF
002	TF	COUBY	-	054 (045.6)	5.0	-	+5 500	-	37°20'30.7"N 126°54'50.7"E (R 164 KIP/D14, R 197 SEL/D4)	-	RNP APCH	SDF
003	TF	WONKO	-	052 (044.2)	4.9	-	+4 000	-	37°24'02.0"N 126°59'08.0"E (R 143 KIP/D13, R 112 SEL/D3)	-	RNP APCH	IF

RNP RWY 32L - via WONKO(IF) to MAHF

Serial Number	Path Descriptor	Waypoint Identifier	Fly-over	Course/Track over	Distance (NM)	Turn direction	Altitude (ft)	Speed (kt)	Coordinates	VPA/TCH	Navigation specification	Remarks
003	TF	WONKO	-	-	-	-	+4 000	-	37°24'02.0"N 126°59'08.0"E (R 143 KIP/D13, R 114 SEL/D3)	-	RNP APCH	IF
004	TF	SS371	-	323 (315.1)	3.6	-	+2 800	-	37°26'36.1"N 126°55'55.6"E (R 144 KIP/D10, R 014 SEL/D2)	-	RNP APCH	SDF
005	TF	SS373	-	323 (315.1)	1.6	-	+2 300	-	37°27'44.9"N 126°54'29.5"E (R 144 KIP/D8, R 350 SEL/D3)	-	RNP APCH	SDF
006	TF	WABAN	-	323 (315.1)	1.3	-	+2 000	-	37°28'42.9"N 126°53'17.0"E (R 144 KIP/D7, R 342 SEL/D4)	-	RNP APCH	FAF
007	TF	RW32L	Y	323 (315.1)	5.9	-	+700	-	37°32'52.8"N 126°48'03.7"E (R 151 KIP/D1, R 331 SEL/D10)	-3.01/50	RNP APCH	MAPt
008	TF	SS375	-	324 (315.9)	7.3	-	-	-	37°38'07.5"N 126°41'39.6"E (R 323 KIP/D7, R 328 SEL/D17)	-	RNP APCH	-
009	TF	CHAMP	Y	234 (226.5)	8.8	-	+4 000	-	37°32'02.0"N 126°33'37.0"E (R 271 KIP/D11, R 300 SEL/D19)	-	RNP APCH	-

HOLDING PROCEDURE

Holding Identification	Path Descriptor	Waypoint Identifier	Fly-over	Course/Track over	Time (min)	Turn direction	Altitude (ft)	Speed (kt)	Coordinates	VPA/RDH	Navigation specification	Remarks
RNP RWY 32L	HM	BUMSI	Y	323 (315.2)	1	R	+8 000	-230	37°15'10.2"N 127°10'09.6"E (R 138 SEL/D15, R 143 KIP/D26)	-	RNAV 1	-
	HM	CHAMP	Y	300 (292.2)	1	R	+4 000	-	37°32'02.0"N 126°33'37.0"E (R 271 KIP/D11, R 300 SEL/D19)	-	RNAV 1	-

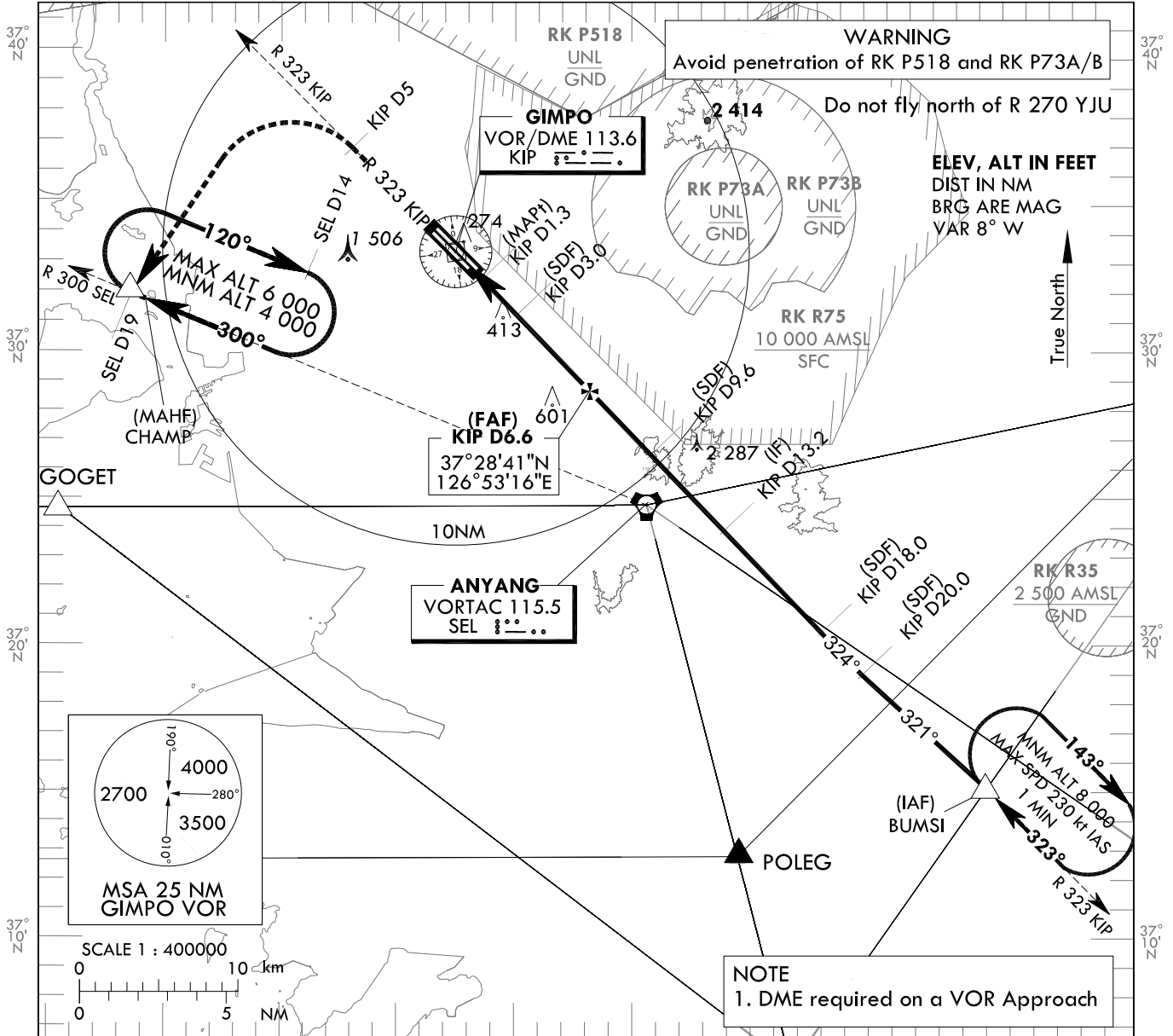
**INSTRUMENT
APPROACH
CHART - ICAO**

AERODROME ELEV 59 ft
HEIGHTS RELATED TO
THR RWY 32L - ELEV 41 ft

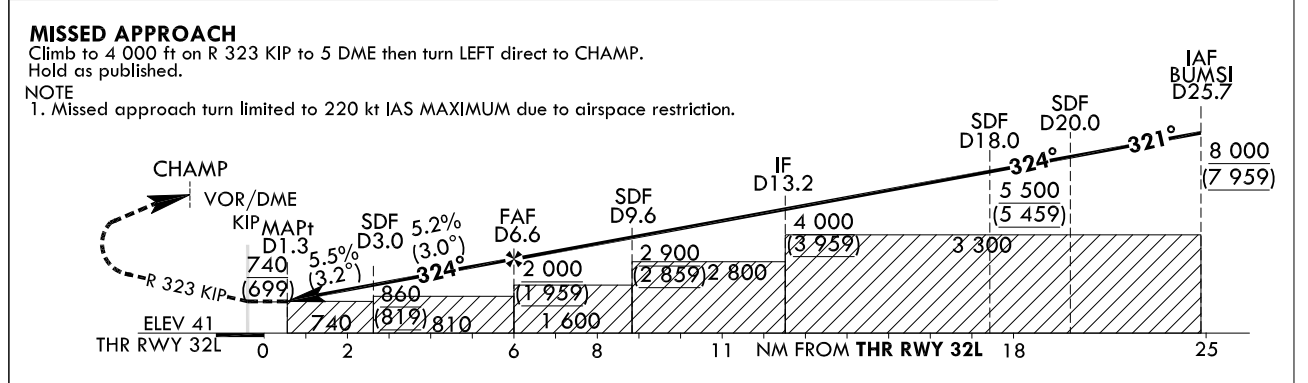
SEOUL APP 119.75
119.1
GIMPO TWR 118.1
118.05

**SEOUL/Gimpo Intl(RKSS)
VOR RWY 32L**

Note : Approach under ICAO Flight Procedures.



RECOMMENDED PROFILE	DME KIP	6	5	4	3	TRANSITION ALT 14 000
Final Gradient 5.2%(316.7 ft/NM) to SDF, 5.5%(335.7 ft/NM) to THR	ALT(HGT)	1 810 (1 769)	1 493 (1 452)	1 177 (1 136)	860 (819)	TRANSITION LVL FL 140



CATEGORY	MDA(MDH)	A				B				C				D				Knots	60	90	120	150	180
		Rate of descent				Rate of descent				Rate of descent													
Straight-in	FULL	740 (699)	2 500 m				2 500 m				2 500 m				V/V fpm	319	478	637	797	956			
	ALS INOP		3 200 m				3 200 m				3 200 m				* Timing Not authorized for defining MAPt. * Circling Not authorized.								

Change : Page control.

SEOUL/Gimpo Intl(RKSS)
VOR RWY 32L

AERONAUTICAL DATA TABULATION

VOR Approach to RWY 32L from BUMSI		
Fix / Point		Coordinates
BUMSI(IAF)		37°15'10.2"N 127°10'09.6"E
D20 KIP(SDF)	BRG 320.74°/5.68 NM	37°19'00.4"N 127°04'54.7"E
D18 KIP(SDF)	BRG 324.18°/18.00 NM KIP	37°20'27.2"N 127°03'10.7"E
D13.2 KIP(IF)	BRG 324.18°/13.20 NM KIP	37°23'55.4"N 126°59'00.7"E
D9.6 KIP(SDF)	BRG 324.18°/9.60 NM KIP	37°26'31.4"N 126°55'52.9"E
D6.6 KIP(FAF)	BRG 324.18°/6.60 NM KIP	37°28'41.4"N 126°53'16.3"E
D3.0 KIP(SDF)	BRG 324.18°/3.00 NM KIP	37°31'17.3"N 126°50'08.2"E
D1.3 KIP(MAPt)	BRG 324.18°/1.30 NM KIP	37°32'30.8"N 126°48'39.2"E
THR RWY32L	Final approach descent angle 2.98°(FAF - SDF)/3.16°(SDF - THR)	37°32'52.83"N 126°48'03.71"E
KIP VOR/DME		37°33'27.1"N 126°47'31.3"E
D5 KIP	R 323 KIP/5.00 NM	37°36'59.7"N 126°43'04.6"E
CHAMP	BRG 222.76°/19.00 NM SEL	37°32'02.0"N 126°33'37.0"E

**INSTRUMENT
APPROACH
CHART - ICAO**

AERODROME ELEV 59 ft
HEIGHTS RELATED TO
THR RWY 32R - ELEV 42 ft

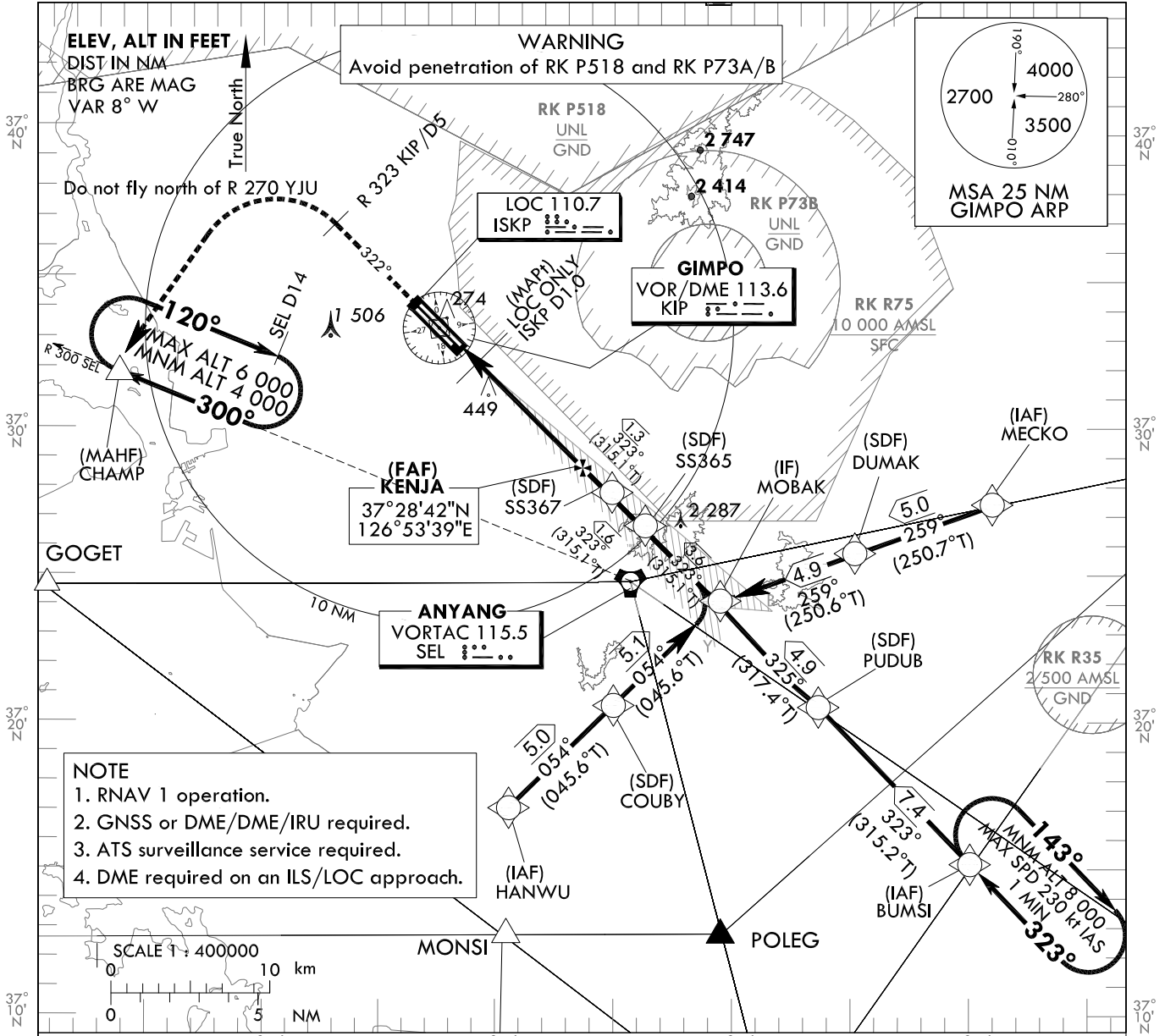
SEOUL APP 119.75
119.1
GIMPO TWR 118.1
118.05

**SEOUL/Gimpo Intl(RKSS)
ILS or LOC RWY 32R**

Note : Approach under ICAO Flight Procedures.

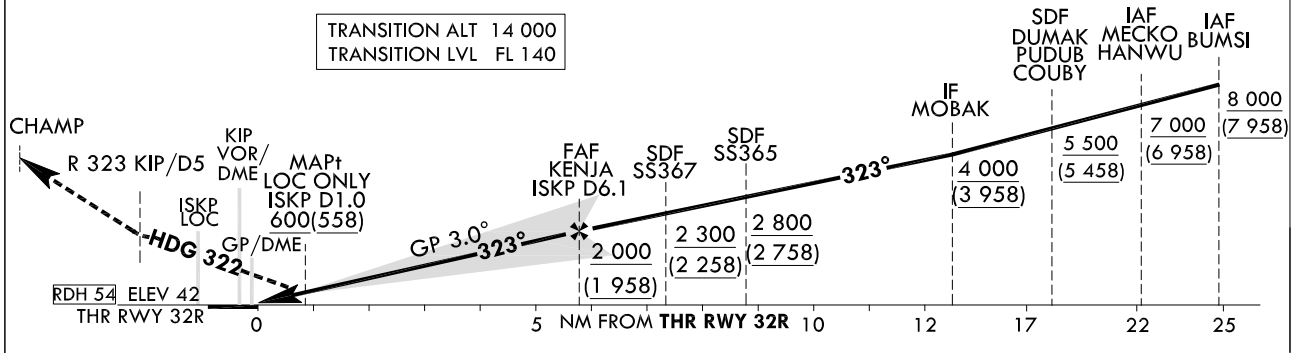
126°50'E

127°10'E



NOTE
1. RNAV 1 operation.
2. GNSS or DME/DME/IRU required.
3. ATS surveillance service required.
4. DME required on an ILS/LOC approach.

RECOMMENDED PROFILE		DME ISKP	6	5	4	3	2
Final Approach Gradient 5.24%, 318 ft/NM	ALT(HGT)	1 968	1 656	1 330	1 005	682	
		(1 926)	(1 614)	(1 288)	(963)	(640)	



CATEGORY	DA(DH)/MDA(MDH)	RVR					DL
		A	B	C	D	DL	
Straight-in	FULL	242	RVR 550 m, VIS 800 m				
		(200)					
	ALS INOP	600	1 200 m				
		(558)	1 800 m				
LOC	GP & ALS INOP	2 500 m					

MISSED APPROACH
After 500 ft, Climb on HDG 322° to R 323 KIP/D5. Continue climb to 4 000 ft. Left turn direct to CHAMP. Hold as published.
NOTE
1. Missed approach turn limited to 220 kt IAS maximum.
* Timing Not authorized for defining MAPt.
* Circling Not authorized.

Change : Page control.

SEOUL/Gimpo Int'l(RKSS)
ILS or LOC RWY 32R

AERONAUTICAL DATA TABULATION

ILS/LOC Approach to RWY 32R from MECKO to MOBAK(IF)		
Fix / Point		Coordinates
MECKO(IAF)		37°27'20.9"N 127°11'04.4"E
DUMAK(SDF)	BRG 258.62°/5.00 NM	37°25'41.9"N 127°05'11.1"E
MOBAK(IF)	BRG 258.56°/4.87 NM	37°24'04.7"N 126°59'25.2"E
ILS/LOC Approach to RWY 32R from BUMSI to MOBAK(IF)		
Fix / Point		Coordinates
BUMSI(IAF)		37°15'10.2"N 127°10'09.6"E
PUDUB(SDF)	BRG 323.49°/7.42 NM	37°20'26.5"N 127°03'36.6"E
MOBAK(IF)	BRG 325.68°/4.93 NM	37°24'04.7"N 126°59'25.2"E
ILS/LOC Approach to RWY 32R from HANWU to MOBAK(IF)		
Fix / Point		Coordinates
HANWU(IAF)		37°17'00.6"N 126°50'21.9"E
COUBY(SDF)	BRG 53.55°/5.00 NM	37°20'30.7"N 126°54'50.7"E
MOBAK(IF)	BRG 053.60°/5.10 NM	37°24'04.7"N 126°59'25.2"E
ILS/LOC Approach to RWY 32R from MOBAK(IF) to MAHF		
Fix / Point		Coordinates
SS365(SDF)	BRG 323.05°/9.00 NM ISKP	37°26'39.3"N 126°56'12.2"E
SS367(SDF)	BRG 323.05°/7.40 NM ISKP	37°27'47.4"N 126°54'47.0"E
KENJA(FAF)	BRG 323.05°/6.10 NM ISKP	37°28'42.2"N 126°53'38.9"E
D1.0 ISKP(MAPt LOC ONLY)	BRG 323.05°/1.00 NM ISKP	37°32'16.7"N 126°49'09.7"E
THR RWY32R		37°32'51.89"N 126°48'25.58"E
ISKP DME		37°32'56.3"N 126°48'12.9"E
KIP VOR/DME		37°33'27.1"N 126°47'31.3"E
Climb to 500 ft	HDG 322	-
D5 KIP	R 323 KIP/5.00 NM	37°36'59.7"N 126°43'04.6"E
CHAMP	BRG 222.76°/19.00 NM SEL	37°32'02.0"N 126°33'37.0"E

Change : Page control.

**INSTRUMENT
APPROACH
CHART - ICAO**

AERODROME ELEV 59 ft
HEIGHTS RELATED TO
THR RWY 32R - ELEV 42 ft

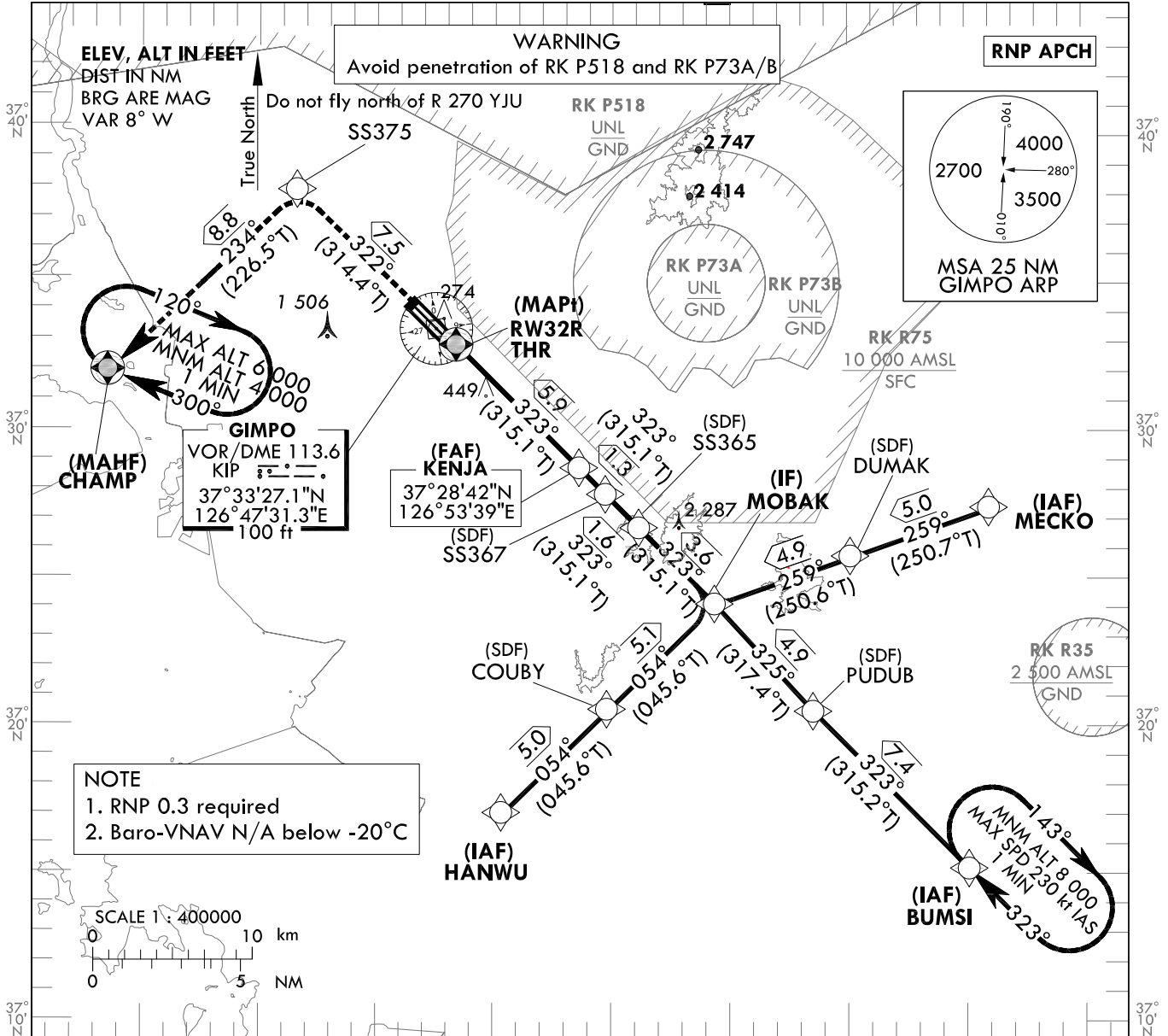
SEOUL APP 119.75
119.1
GIMPO TWR 118.1
118.05

**SEOUL/Gimpo Intl(RKSS)
RNP RWY 32R**

Note : Approach under ICAO Flight Procedures.

126°50'E

127°10'E



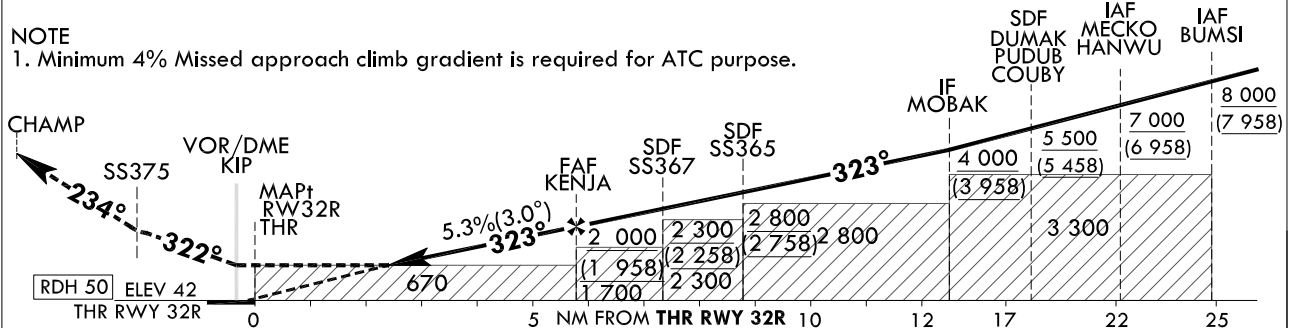
MISSED APPROACH

Climb to 4 000 ft. Track to SS375 and CHAMP. Hold as published.

TRANSITION ALT 14 000
TRANSITION LVL FL 140

NOTE

1. Minimum 4% Missed approach climb gradient is required for ATC purpose.



CATEGORY		MDA(H)/DA(H)	A	B	C	D	Knots					
LNAV	FULL	670 (628)		2 200 m			Rate of descent V/V fpm	60	90	120	150	180
	ALS INOP			2 900 m				318	478	637	796	955
LNAV/VNAV	FULL	600 (558)		1 800 m			* Timing Not authorized for defining MAPt. * Circling Not authorized.					
	ALS INOP			2 500 m								

Change : Page control.

AERONAUTICAL DATA TABULATION

Instrument Approach Procedure Coding Tables

RNP RWY 32R - via MECKO to MOBAK(IF)

Serial Number	Path Descriptor	Waypoint Identifier	Fly-over	Course/Track °M(°T)	Distance (NM)	Turn direction	Altitude (ft)	Speed (kt)	Coordinates	VPA/TCH	Navigation specification	Remarks
001	IF	MECKO	-	-	-	-	+7 000	-	37°27'20.9"N 127°11'04.4"E (R 116 KIP/D20, R 086 SEL/D13)	-	RNP APCH	IAF
002	TF	DUMAK	-	259 (250.7)	5.0	-	+5 500	-	37°25'41.9"N 127°05'11.1"E (R 127 KIP/D16, R 091 SEL/D8)	-	RNP APCH	SDF
003	TF	MOBAK	-	259 (250.6)	4.9	-	+4 000	-	37°24'04.7"N 126°59'25.2"E (R 143 KIP/D13, R 112 SEL/D3)	-	RNP APCH	IF

RNP RWY 32R - via BUMSI to MOBAK(IF)

Serial Number	Path Descriptor	Waypoint Identifier	Fly-over	Course/Track °M(°T)	Distance (NM)	Turn direction	Altitude (ft)	Speed (kt)	Coordinates	VPA/TCH	Navigation specification	Remarks
001	IF	BUMSI	-	-	-	-	+8 000	-	37°15'10.2"N 127°10'09.6"E (R 143 KIP/D26, R 138 SEL/D15)	-	RNP APCH	IAF
002	TF	PUDUB	-	323 (315.2)	7.4	-	+5 500	-	37°20'26.5"N 127°03'36.6"E (R 143 KIP/D18, R 133 SEL/D8)	-	RNP APCH	SDF
003	TF	MOBAK	-	326 (317.4)	4.9	-	+4 000	-	37°24'04.7"N 126°59'25.2"E (R 143 KIP/D13, R 112 SEL/D3)	-	RNP APCH	IF

RNP RWY 32R - via HANWU to MOBAK(IF)

Serial Number	Path Descriptor	Waypoint Identifier	Fly-over	Course/Track °M(°T)	Distance (NM)	Turn direction	Altitude (ft)	Speed (kt)	Coordinates	VPA/TCH	Navigation specification	Remarks
001	IF	HANWU	-	-	-	-	+7 000	-	37°17'00.6"N 126°50'21.9"E (R 180 KIP/D17, R 217 SEL/D9)	-	RNP APCH	IAF
002	TF	COUBY	-	054 (045.6)	5.0	-	+5 500	-	37°20'30.7"N 126°54'50.7"E (R 164 KIP/D14, R 197 SEL/D4)	-	RNP APCH	SDF
003	TF	MOBAK	-	054 (045.6)	5.1	-	+4 000	-	37°24'04.7"N 126°59'25.2"E (R 143 KIP/D13, R 112 SEL/D3)	-	RNP APCH	IF

RNP RWY 32R - via MOBAK(IF) to MAHF

Serial Number	Path Descriptor	Waypoint Identifier	Fly-over	Course/Track °M(°T)	Distance (NM)	Turn direction	Altitude (ft)	Speed (kt)	Coordinates	VPA/TCH	Navigation specification	Remarks
003	TF	MOBAK	-	-	-	-	+4 000	-	37°24'04.7"N 126°59'25.2"E (R 143 KIP/D13, R 112 SEL/D3)	-	RNP APCH	IF
004	TF	SS365	-	323 (315.1)	3.6	-	+2 800	-	37°26'39.3"N 126°56'12.2"E (R 142 KIP/D10, R 020 SEL/D2)	-	RNP APCH	SDF
005	TF	SS367	-	323 (315.1)	1.6	-	+2 300	-	37°27'47.4"N 126°54'47.0"E (R 142 KIP/D8, R 354 SEL/D3)	-	RNP APCH	SDF
006	TF	KENJA	-	323 (315.1)	1.3	-	+2 000	-	37°28'42.2"N 126°53'38.9"E (R 142 KIP/D7, R 345 SEL/D4)	-	RNP APCH	FAF
007	TF	RW32R	Y	323 (315.1)	5.9	-	+670	-	37°32'51.9"N 126°48'25.6"E (R 137 KIP/D1, R 332 SEL/D10)	-3.01/50	RNP APCH	MAPt
008	TF	SS375	-	322 (314.4)	7.5	-	-	-	37°38'07.5"N 126°41'39.6"E (R 323 KIP/D7, R 328 SEL/D17)	-	RNP APCH	-
009	TF	CHAMP	Y	234 (226.5)	8.8	-	+4 000	-	37°32'02.0"N 126°33'37.0"E (R 271 KIP/D11, R 300 SEL/D19)	-	RNP APCH	-

HOLDING PROCEDURE

Holding Identification	Path Descriptor	Waypoint Identifier	Fly-over	Course/Track °M(°T)	Time (min)	Turn direction	Altitude (ft)	Speed (kt)	Coordinates	VPA/RDH	Navigation specification	Remarks
RNP RWY 32R	HM	BUMSI	Y	323 (315.2)	1	R	+8 000	-230	37°15'10.2"N 127°10'09.6"E (R 138 SEL/D15, R 143 KIP/D26)	-	RNAV 1	-
	HM	CHAMP	Y	300 (292.2)	1	R	-6 000 +4 000	-	37°32'02.0"N 126°33'37.0"E (R 271 KIP/D11, R 300 SEL/D19)	-	RNAV 1	-

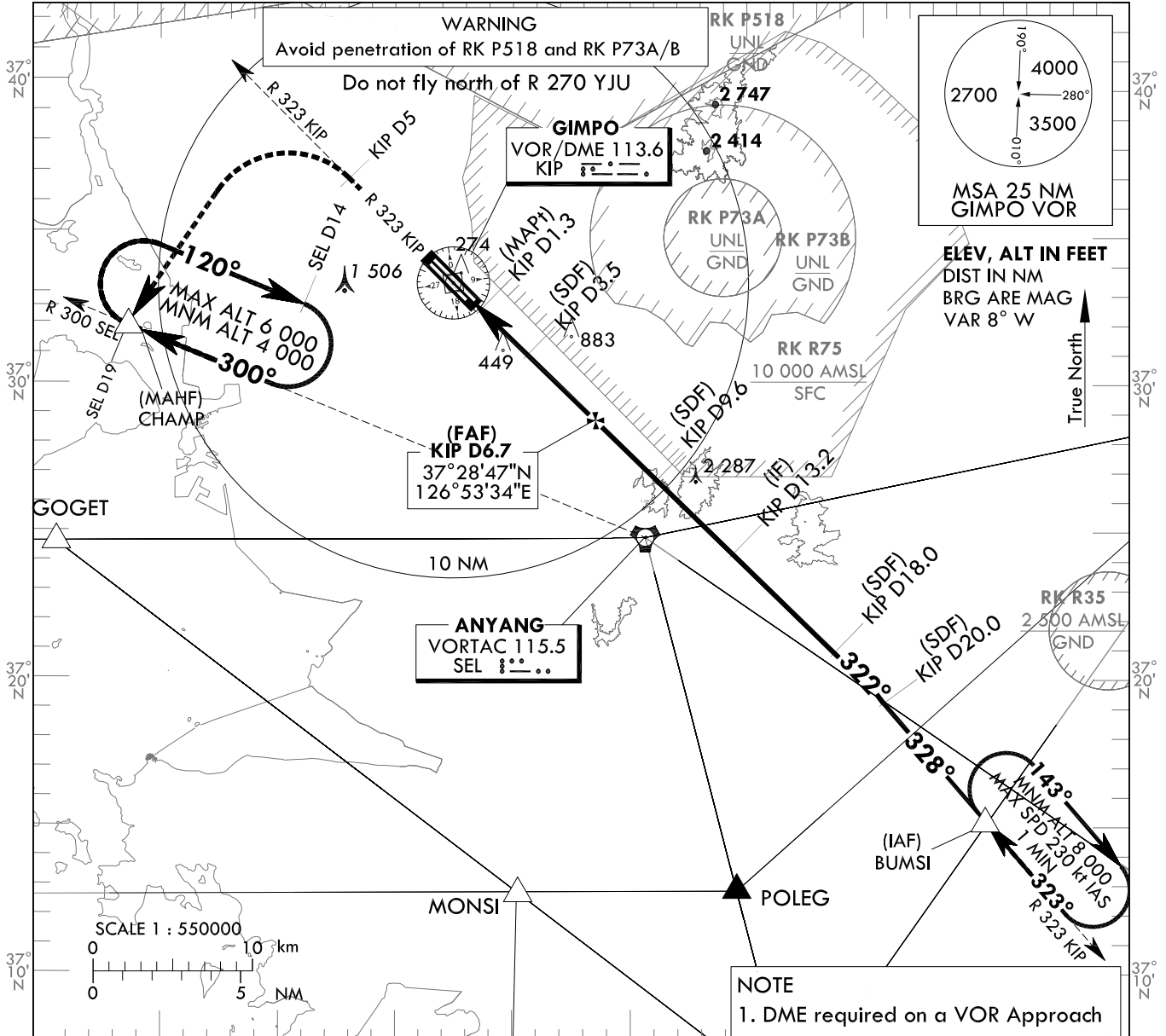
**INSTRUMENT
APPROACH
CHART - ICAO**

AERODROME ELEV 59 ft
HEIGHTS RELATED TO
THR RWY 32R - ELEV 42 ft

SEOUL APP 119.75
119.1
GIMPO TWR 118.1
118.05

SEOUL/Gimpo Intl(RKSS)
VOR RWY 32R

Note : Approach under ICAO Flight Procedures.



RECOMMENDED PROFILE		DME KIP	6	5	4	3
Final Gradient 5.2%(318.8 ft/NM) to SDF, 5.7%(345.5 ft/NM) to THR		ALT(HGT)	1 779(1 737)	1 460(1 418)	1 141(1 399)	809(767)

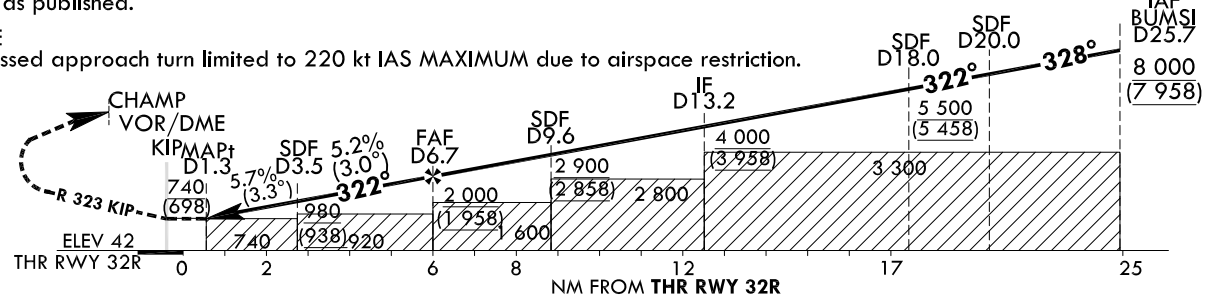
MISSED APPROACH

Climb to 4 000 ft on R 323 KIP to 5 DME then turn LEFT direct to CHAMP.
Hold as published.

TRANSITION ALT 14 000
TRANSITION LVL FL 140

NOTE

1. Missed approach turn limited to 220 kt IAS MAXIMUM due to airspace restriction.



CATEGORY	FULL	ALS INOP	MDA(H)/DA(H)	A				B				C				D				Knots	60	90	120	150	180
				Rate of descent	V/V	fpm	331	486	661	827	992														
Straight-in			740 (699)	2 500 m				3 200 m				* Timing Not authorized for defining MAPt. * Circling Not authorized.													

Change : Page control.

AERONAUTICAL DATA TABULATION

VOR Approach to RWY 32R from BUMSI		
Fix / Point		Coordinates
BUMSI(IAF)		37°15'10.2"N 127°10'09.6"E
D20 KIP(SDF)	BRG 327.79°/5.69 NM	37°19'29.9"N 127°05'32.0"E
D18 KIP(SDF)	BRG 322.18°/18.00 NM KIP	37°20'53.8"N 127°03'44.2"E
D13.2 KIP(IF)	BRG 322.18°/13.20 NM KIP	37°24'15.2"N 126°59'25.7"E
D9.6 KIP(SDF)	BRG 322.18°/9.60 NM KIP	37°26'45.9"N 126°56'11.2"E
D6.7 KIP(FAF)	BRG 322.18°/6.70 NM KIP	37°28'47.0"N 126°53'34.1"E
D3.5 KIP(SDF)	BRG 322.18°/3.50 NM KIP	37°31'00.8"N 126°50'40.9"E
D1.3 KIP(MAPt)	BRG 322.18°/1.30 NM KIP	37°32'32.2"N 126°48'41.0"E
THR RWY32R	Final approach descent angle 3.00°(FAF - SDF)/3.25°(SDF - THR)	37°32'51.89"N 126°48'25.58"E
KIP VOR/DME		37°33'27.1"N 126°47'31.3"E
D5 KIP	R 323 KIP/5.00 NM	37°36'59.7"N 126°43'04.6"E
CHAMP	BRG 222.76°/19.00 NM SEL	37°32'02.0"N 126°33'37.0"E